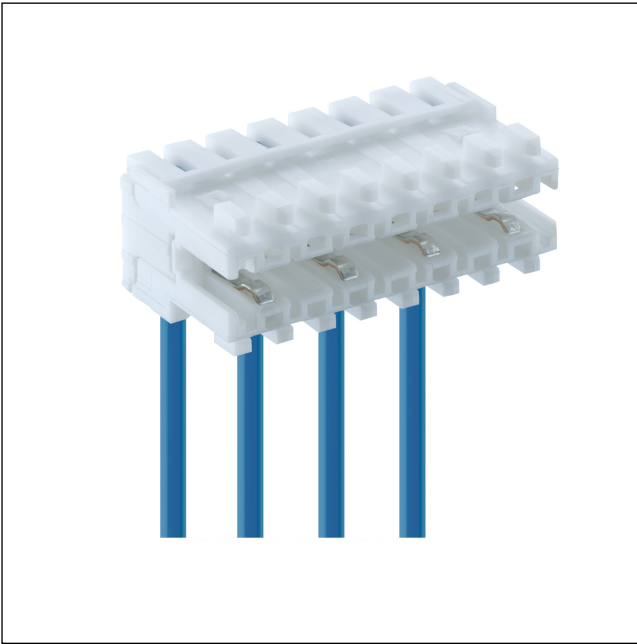


35

352300

RAST 2.5 connectors, pitch 2.5/5.0 mm

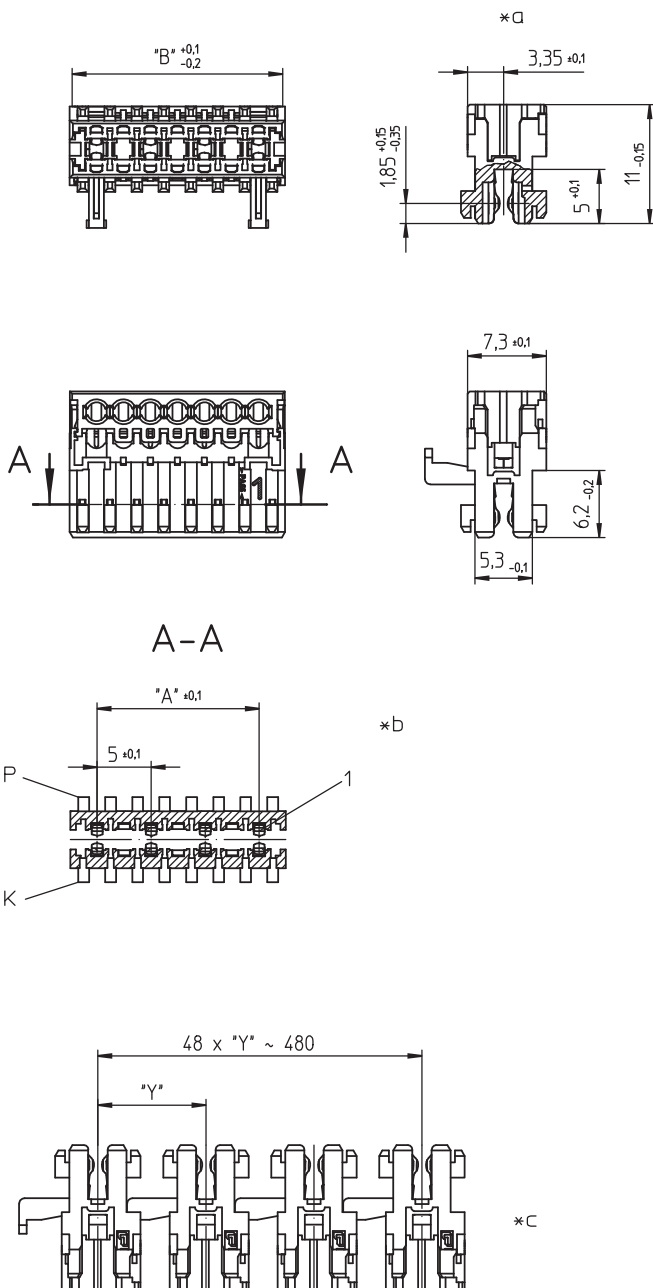


RAST 2.5 plus™ connector for direct and indirect mating,
with double-sided keying, insulation displacement
technology (IDT), consecutive placement without loss of
pitch
contact pitch 5.0 mm

Approvals:



35 352300



- *a terminated connector
- *b K = keying
P = Positioning
- *c chaining of the component parts (state of delivery)

Environmental conditions

Temperature range -40 °C/+130 °C – 352100
-40 °C/+150 °C – 352300 M30¹

¹ valid for both: upper limit temperature (insulating body) RTI (electrical) of the UL Yellow Card

Materials

Insulating body PA, V-0 according to UL94 – 352300
PA, V-0 according to UL94 – 352300 M30¹

Contact spring CuSn, tin-plated
(6 poles with contact variant V214, CuSn, tin-plated, with lubricant)


¹ valid for both: material halogen-free, GWFI 850 °C, GWIT 775 °C

Mechanical data

Mating with printed circuit board 1.5 ± 0.14 mm

Insertion force/contact ≤ 4,0 N

Withdrawal force/contact ≥ 0,5 N

Keying proposals at www.lumberg.com 


Connectable conductors for IDT area

Construction discrete conductor, notched flat cable 2.5 mm

Section min. 0,35 mm²

Section max. 0,38 mm²

Insulation diameter ≤ 1,6 mm

Approved cables at www.lumberg.com 

Electrical data (at T_{amb} 20 °C)

Contact resistance ≤ 5 mΩ

Rated current 4 A (T_{amb} 60 °C, VDE/cULus)
2 A (T_{amb} 100 °C, VDE)

Rated voltage 250 V AC (VDE/cULus)

Material group I (IEC)/0 (UL) (CTI ≥ 600)

Creepage distance 3,65 mm

Clearance 3,20 mm

Insulation resistance > 1 GΩ

Associated products

Counterparts

- | | | |
|--------------------------|--------------------------|--------------------------|
| ↗ 3542 | ↗ 3542-1 | ↗ 3546 |
| ↗ 3546-1 | ↗ 3552 | ↗ 355295 |
| ↗ 355299 | ↗ 3556 | ↗ 83546 |

Accessories

- [↗ 3500](#)

Harnessing equipment

- | | | |
|---------------------------------------|---------------------------------------|------------------------------------------|
| ↗ HA3...e | ↗ HA35 plus | ↗ HZ35-K |
| ↗ KHP35 plus | ↗ VARICON 7000 | ↗ VARICON 7000-Eco |
| ↗ VARICON 7000-Eco-CR | ↗ VARICON 7000-Inline | ↗ VARICON 7000-Inline-CR |
| ↗ VARICON 7000-RD | ↗ VARICON 7000-RD-CR | |

35

352300

Designation	Pole Number	PU (Pieces)	MDQ (Pieces)	Dimensions	
				A (mm)	B (mm)
352300 02	2	3456	10368	5.0	9.9
352300 03	3	2160	10800	10.0	14.9
352300 04	4	1728	5184	15.0	19.9
352300 05	5	1296	3888	20.0	24.9
352300 06	6	864	2592	25.0	29.9

Designation to be completed by further details (e.g. for keying, color or material options).

Packaging:

chained, in a cardboard box